

Aura Video Analysis: An 18Hz Infratonic signal catalyzed a shift in Patricia's "aura" from indigo to white. (see article)

Healing the Emotional Body

by Richard H. Lee

What are emotions? Are they illusion or the fabric of human experience? Are they real? And the big question, "Are they measurable?"

One of the working hypotheses behind CHI Institute research is the existence of a magnetic ether¹, a magnetic "fluid" that surrounds us and inter-connects us, within which we experience our motivations and emotional highs and lows.

To understand how our inter-connection with others through Earth's magnetic field affects our joy and physical health, please see the article on page two -

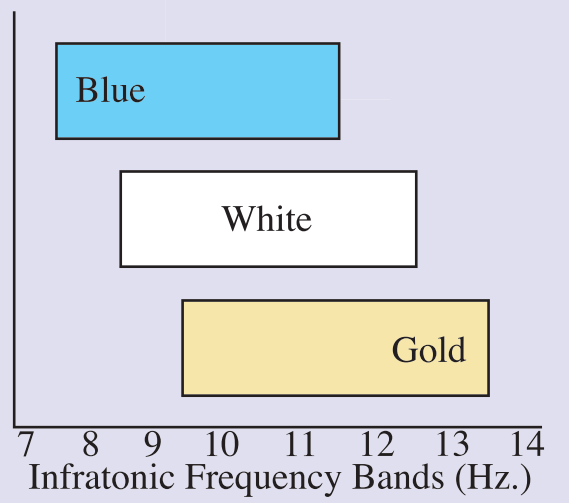
"Fear, Worry, and Irritation".

Magnetic Waves and Auras

I've always wanted to "see auras." But no matter how I have squinted and gazed, my efforts have failed. Years ago, an 11 year-old child was

reported not only to see the aura surrounding people, but also, colors emanating from the transducer of the Infratonic! I organized some experiments for him and found that he saw blue coming from

Infratonic Colors



An 11 year old child saw colors projecting from the Infratonic at different frequencies.

an Infratonic configured to include frequencies below 8.5 Hz. He saw white from an Infratonic emitting 8.5-12.5, and gold from a signal similar to the Mind signal in the Infratonic 8. Could it be that the

Infratonic produces colors visible to aura readers?

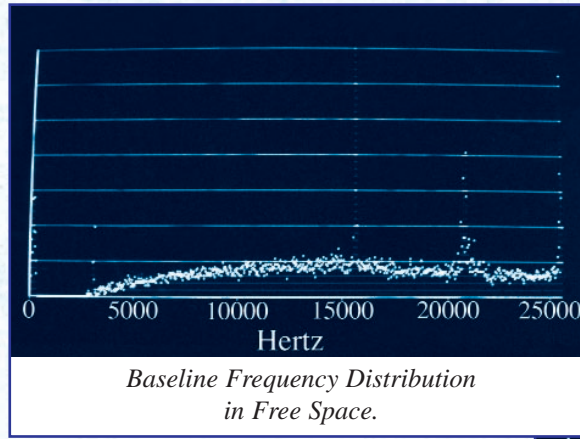
Recently my wife Patricia and I had our "Aura Video Photos" taken at a trade show. The computer program described our psychological nature perfectly. Coincidentally, we attended one of the ongoing research projects conducted by Dr. Valerie Hunt², a well known human energy field researcher, author and lecturer, who selected Patricia as one of the test subjects and wired her up to the electrodes of her Aura Meter. Amazingly the aura reader, Rosalyn Bruyere³, a gifted healer, teacher, and aura reader, described the colors of Patricia's aura almost exactly as they appeared in the aura video photo. Something was truly measurable. What was Rosalyn seeing?

Based on the hypothesis that a magnetic ether supports the human emotional field, I built a magnetic longitudinal wave sensor (scalar waves) and discovered that the space around us is flooded with these waves.

continued on page 2

This equipment also registered both 50 Hz and 60 Hz spikes, which means that the scalar waves from the European and Asian power grids were as strong in California as the waves from the US power grid! It appears that we live in a world-wide soup of vibration in Earth's magnetic ether! If it is true that fear, worry and irritation are contagious and travel on this magnetic ether, no wonder that there's so much irritation these days! Moods you feel may not be your own, but rather, intense emotional suffering in the next room or in another part of the world.

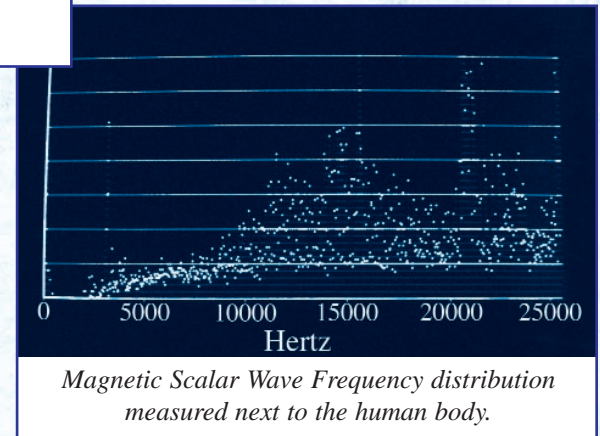
Further, during the recent solar magnetic storm, frequent waves of high magnetic activity swept through and overloaded my equipment. I also discovered that these magnetic scalar waves were much stronger at the



surface of a human body than in free air.

While exploring these magnetic scalar waves, I also made a remarkable discovery: The signals produced by the Infratonic 8 were easily measurable by the magnetic sensor from several feet away, and they easily penetrated a steel box (as might be expected for scalar waves).

Since the child saw both the aura surrounding the physical body and the signal emanating from the Infratonic, could it be possible that he might have been seeing the longitudinal magnetic waves from the Infratonic? To explore this question, I set up an Infratonic with narrow frequency bandwidth and invited Cheryl Houghton, an aura video photography consultant with an ability



Fear, Worry, and Irritation

Fear, worry, and irritation are the principal causes of pain, exhaustion, and chronic illness today. Unlike genetic predispositions to disease, which are also major causes of suffering, these emotional factors are controllable in our daily lives, and often determine whether genetic factors manifest in our lives. When these emotional factors are absent, we experience calm, clarity, and joy.

One BIG problem with fear, worry, and irritation is that they are extremely contagious. They reproduce like rabbits within those afflicted with them, and radiate outward from our magnetic bodies through the magnetic field of Earth to infect whoever is susceptible to their vibration. It is difficult to hear about terrorist scares or natural disasters and not feel the vibration of fear and worry within us. Sometimes

these feelings are so intense in the people around us that we feel uneasy without a word being exchanged.

Keep in mind that the 50Hz magnetic noise from the European and Asian power systems had no trouble traveling half way around the world to register on my magnetic sensor. There is no escape. These magnetic scalar waves travel right through a steel box. It is thus clear how one person who is feeling argumentative can draw others into volatile but pointless arguments, and how a tranquil person who simply responds to our ravings with calm words, brings us to a state of deep calm.

Fear, Worry, and Irritation fill our blood with adrenaline and drive our cells into needless and often pointless activity until our vital resources are exhausted. In this weakened state, we are open to flu viruses, and if the

depleted state persists, a variety of chronic illnesses. Further, for as long as this emotional "virus" of fear, worry, or irritation, is active within us, we are broadcasting copies of it to those around us.

The "Mind" signal of the Infratonic 8 for just 10 minutes provides a profound relaxation, cutting quickly through noise in the nervous system. While many use it for accelerated recovery and pain relief, a very large number use it for relaxation from the stress and anxiety of daily life, and to calm the nervous system for deep and undisturbed sleep.

The "Spirit" signal opens our bodies and minds to intuition, helping us to see our lives in perspective of a bigger picture, and to choose effective action.

to discern clear colors in the human aura, to act as the aura reader.

The results show that Cheryl saw colors from the Infratonic distinctly separate from the aura colors. However, she only saw these Infratonic colors when the transducer was within about 18 inches of the test subject. Otherwise, she saw just clear waviness from the Infratonic. This indicates that, while the Infratonic can influence the human aura, she sees the color of the influenced aura, and does not see the color of the Infratonic signal directly.

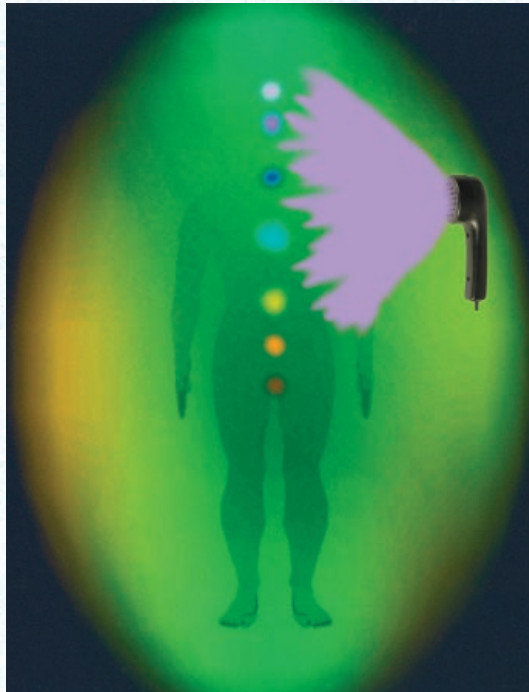
The colors did not correlate repeatably to the frequency. Thus it became clear that everybody's aura responds differently to the same frequency, and a single individual can respond with different colors at different times. This is discussed further below.

There was, however, a general correlation: Below 7 Hertz colors reported by Cheryl were usually oranges, yellows, and greens. Between 7 and 8 Hz, the colors were muddy, without the luminous brilliance she observed in higher ranges. In the Chaotic Alpha™ range of 8.5 to 13.8, the colors were luminous and often non-spectrum colors like peach, pink, and pink/lavender. Above 14 Hz, the colors tended toward greens, blues, and indigos.

When the Chaotic Alpha signal was applied, Cheryl observed a consistent effect different from that observed with the individual frequency signals. Instead of a line of transition between the Infratonic signal and the person's aura, she observed a large flow of energy as if the two fields were blending smoothly, a union between the Infratonic signal and the aura.

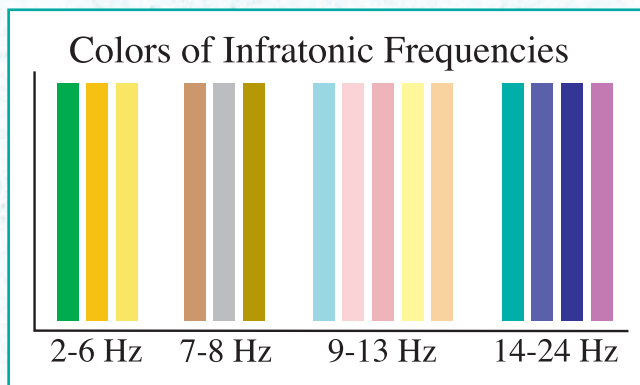
When we applied the Infratonic Intuition signal, a component of the Spirit signal of the Infratonic 8, the aura reader saw a large stream of violet light, in all test subjects, flowing from the

Infratonic into the aura. When the aura color was close to violet, the flow was a union. When the color of the aura was considerably different, this flow appeared as several fingers from the Infratonic that extended far into the aura, as shown below.



When the Intuition signal was applied Cheryl observed violet streamers reaching deep into the aura.

In a fascinating sidelight: With all of the different individual frequencies that had been aimed at Patricia during the initial



This graph shows the colors most often observed by Cheryl projecting from the Infratonic at different frequencies.

experiment, her aura had changed from her normal blue-indigo-lavender colors to white, as reported by Cheryl and also shown by the Aura Video photos. One particular event seemed to be the turning point in Patricia's colors. An Infratonic signal of 18 Hz

(part of the Spirit signal) was projected at Patricia during which Cheryl described a bright mint green color appearing in Patricia's aura, which lingered for several minutes then faded into white. Patricia described it as a blissful feeling in her heart. The frequency apparently spoke to her in a very deep soft way that guided her back into her heart because Cheryl observed that Patricia's aura had turned white, which was also registered by the Aura Video System for several minutes.

(See aura photos on page 1)

What could that Infratonic signal have said to her?

Footnotes:

¹ Deutsch, Sid, **Return of the Ether - When Theory and Reality Collide**, 1999 SciTech Publishing.

² Hunt, Valerie, **Infinite Mind, The Science of Human Vibration**, Malibu Publishing.

³ Bruyere, Rosalyn, **Wheels of Light, Chakras, Auras, and the Healing Energy of the Body**, Fireside 1994.

Field Hockey Smash

My husband was playing Field Hockey and got his hand smashed. It ballooned up (very swollen). I told him to place the QGM on his hand and wrist. He used it for about 20 minutes four times per week for 3 or 4 weeks. Hand returned to normal size. X-rays taken after swelling went down. Dr. was surprised there were no broken bones. There was no bruising on hand or wrist, but a perfect line around his arm just above the wrist. From the line, there was bruising all the way up to his shoulder. His hand and wrist were back to normal.

J. A. Ortega, Fallbrook, CA

Two-Week Old Burn

As a Chiropractor my hands are important. On Christmas eve, 2003, I burned my second finger on a white hot fire place grate (3rd degree burn). I tried antibiotic creams for two weeks but no improvement. I then remembered an article about burn treatment with the Infratonic. Between patients I applied the Infratonic to the affected area for 10 minutes several times per day. After three days a scar formed and dried. After ten days the wound completely healed with no scarring. I cannot tell where my finger was burned. Had I not used the Infratonic I believe I would have had to endure a skin graft. I have no discomfort and complete use of the finger.

Dr. J. B. Garvin, Montgomery, AL

Chronic Fatigue and Fibromyalgia

Six years ago I was diagnosed with Chronic Fatigue, Fibromyalgia, and environmental illness. I had no energy, couldn't sleep or eat well, and ached all over. I started using the Infratonic daily and experienced dramatic improvements. I used it in the evening when I went to bed, applying it for about ten minutes each to my feet, back, neck, stomach, and lower abdomen, for a total of about 45 minutes. The first benefit I noticed was reduced pain in my back and neck. My sleeping improved dramatically, which made my recovery from Chronic Fatigue much easier. My energy level has increased rapidly due to the Infratonic.

D. Wood-Campbell, Danville, CA

Whiplash

I was involved in a severe car accident in Feb of 2004, with severe whiplash in the cervical spine, inflammation in my neck, shoulders, midback, and radiating pain and tenderness. In March of 2004 I used the infratonic for two weeks. I would set it on mind and place it on my chest at bedtime. After

about 20 minutes I would set it near C6-C7 on the bed and fall asleep on my side. My pain went from an eight to a two. My range of motion improved. I was able to complete my daily tasks without pain. My sleep was restful and invigorating. Overall, my body felt like it was refreshed and new.

T. Baca, San Clemente, CA

Broken Leg Post Surgery

My leg was broken in three places requiring surgery, with a lot of swelling. A friend applied the Infratonic to my leg. The swelling reduced very rapidly and no leg pain. I received an Infratonic treatment every day for three weeks on my knee and ankle on the body setting. Also, the machine has helped my diabetes.

M. Gonzales, La Mirada, CA

Endometriosis (4 Surgeries) and Scar Tissue

I treated my pelvic region every night for 10 to 30 minutes. Scar tissue decreased tremendously. Healing tripled (time of healing). Sleep improvement. Reduced pain and inflammation. Emotional release.

J. Tate Tucson, AZ

USER REPORTS

Chronic Colitis and Irritable Bowel Syndrome

Female patient with both chronic colitis and irritable bowel syndrome which she had for 10 years duration before seeing me. I treated this patient with chiropractic adjustments but with only marginal improvement. I had the patient lie supine and had her hold the transducer and apply it on the abdomen, moving it slowly from right to left and at the same time from lower abdomen to upper abdomen. The Infratonic was set on medium for 20 minutes. I instructed her to stop moving the transducer and hold it steady any time she felt tenderness or any unusual feeling. The patient had two treatments per week for two weeks. She reported that all of her symptoms were completely gone, and they were still gone four weeks later when I examined her.

R. A. Hooper, D. C. Fresno, CA

Copyright © 2004 CHI Institute. All Rights Reserved.



100 Avenida Pico
San Clemente, CA 92672
(949) 361-3976
www.chi.us

Presorted Std.
U.S. Postage
PAID
Santa Ana, CA
Permit No. 1135